

Wi-Fi Sensor Software Logger Setup

Page 1: Before Starting.

Page 2-3: Local PC Setup.

Page 4-5: Cloud Setup.

Before Starting:

- Factory Reset: If you are having difficulty setting up a logger and getting failed setups then a factory reset may resolve the issue. This will clear all the memory on the logger of previous configuration and allow an "Out of the box" Experience again.
 - o To do a Factory Reset hold the central button for 20 seconds. You should see after 10 seconds "rSt" on the screen then after 20 seconds "FaRs". Then let go of the button. The logger will now reset and should be ready for setup after around 10 seconds.
- Some networks may need firewall port settings changed or additional exceptions added to allow for successful communication between the logger and its intended recipient. Please see below for details.

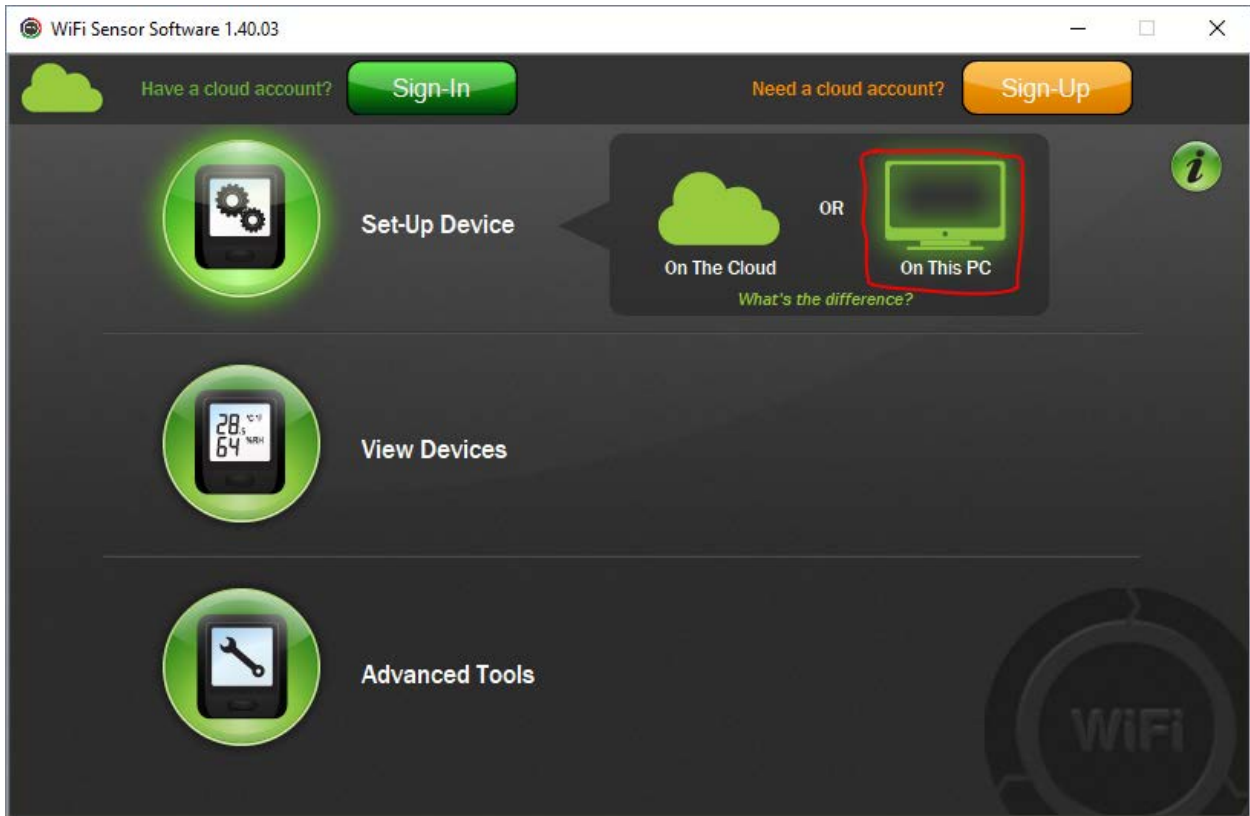
Local PC Setup:

- o TCP 10080 Inbound and Outbound on the local PC.
- o UDP 8010 Inbound and Outbound on the local PC.
- o UDP 1024 Inbound and Outbound on the local PC.
- o UDP Broadcast must be enabled on the Access-point (AP), if not possible then a static IP address will need to be assigned to the logger during setup. This will often be found where setup was successful but then the logger no longer connects to the local PC/cannot be found.
- o The logger and the PC must both be on the same subnet as each other.

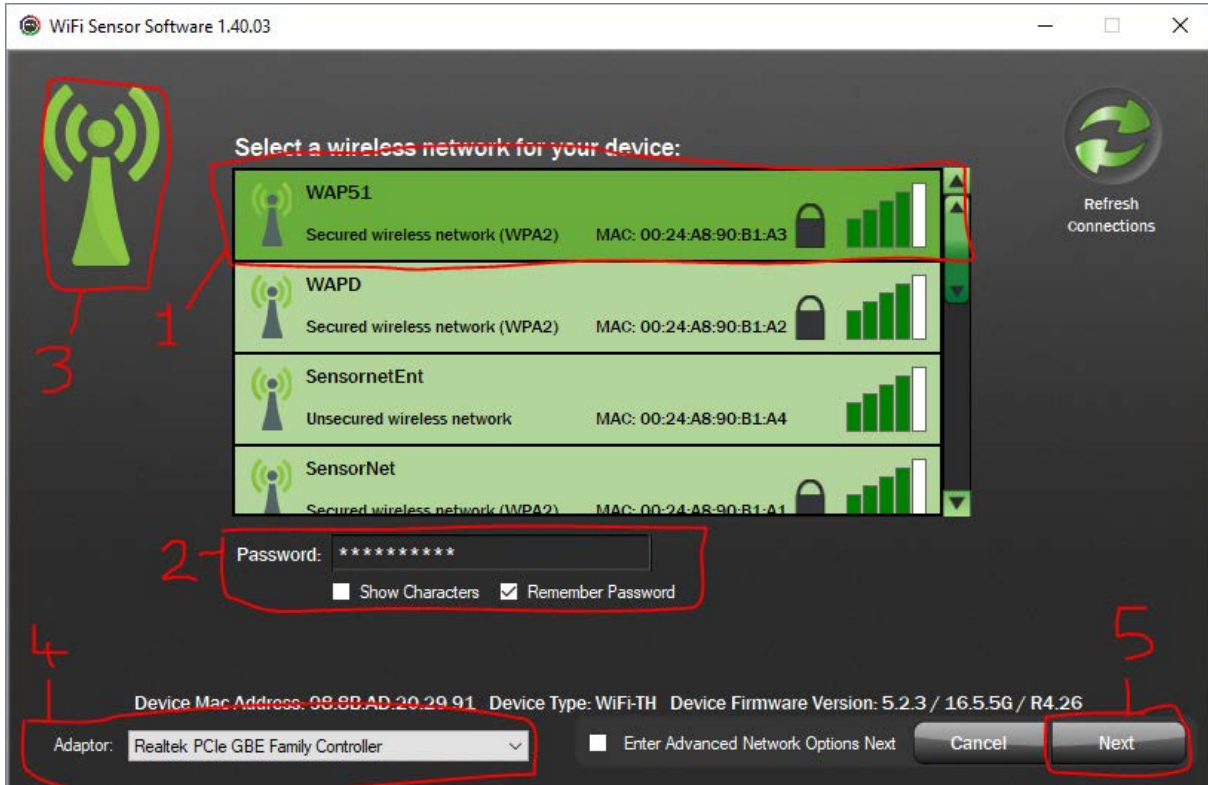
Cloud Setup:

- o TCP 443 Inbound and Outbound on the Router/Firewall.
- o TCP 14354 Inbound and Outbound on the Router/Firewall.
- o On a corporate network that only allows access to specific IP addresses the following addresses must be allowed.
 - 78.136.35.242
 - 134.213.3.2

To setup a new device on the local PC click on “Set-Up Device” then “On This PC”.



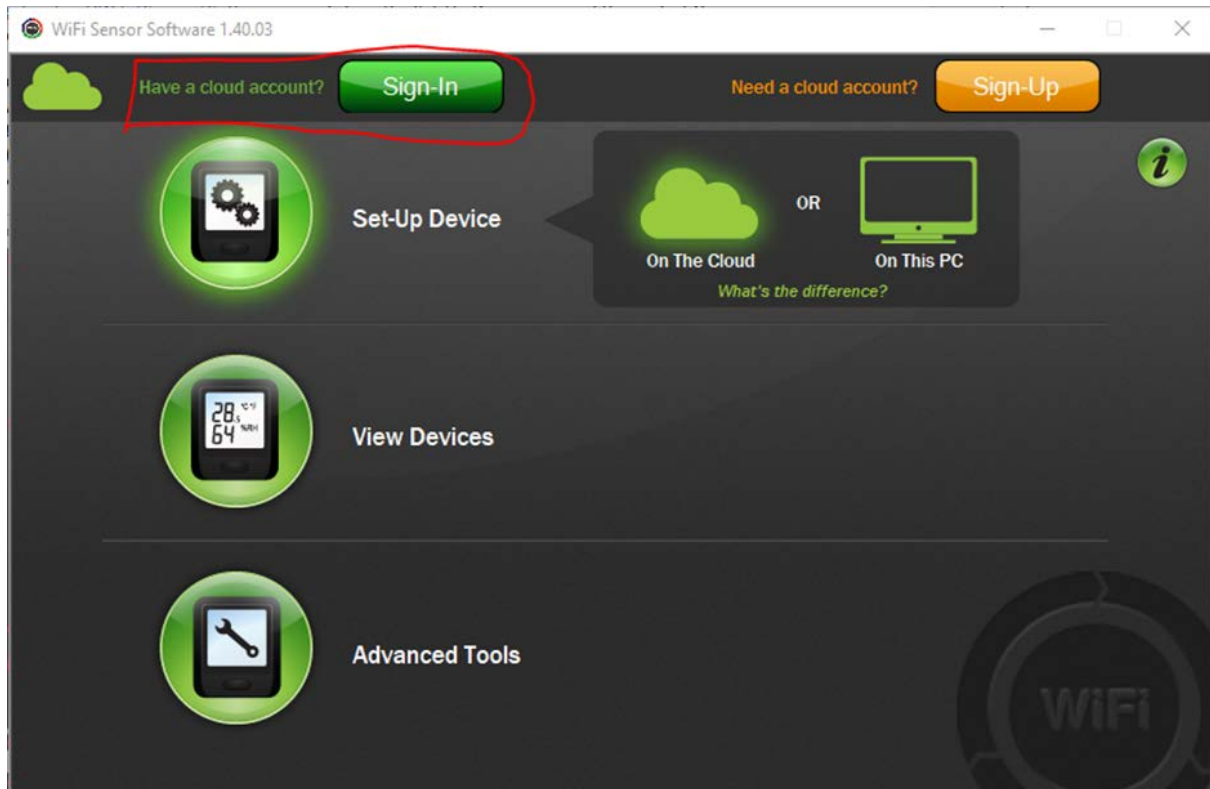
- Ensure that the logger is connected via USB and that only one logger is connected at any one time.
- Next [1] select the Wi-Fi access point to be used by the logger and [2] enter the password below.
- Then [3] Click on the green antenna in the top left, a new option will show at the bottom called “Adaptor”.
- [4] Select your local network adaptor and not “Software Loopback Interface 1”. Finally [5] click “Next”.



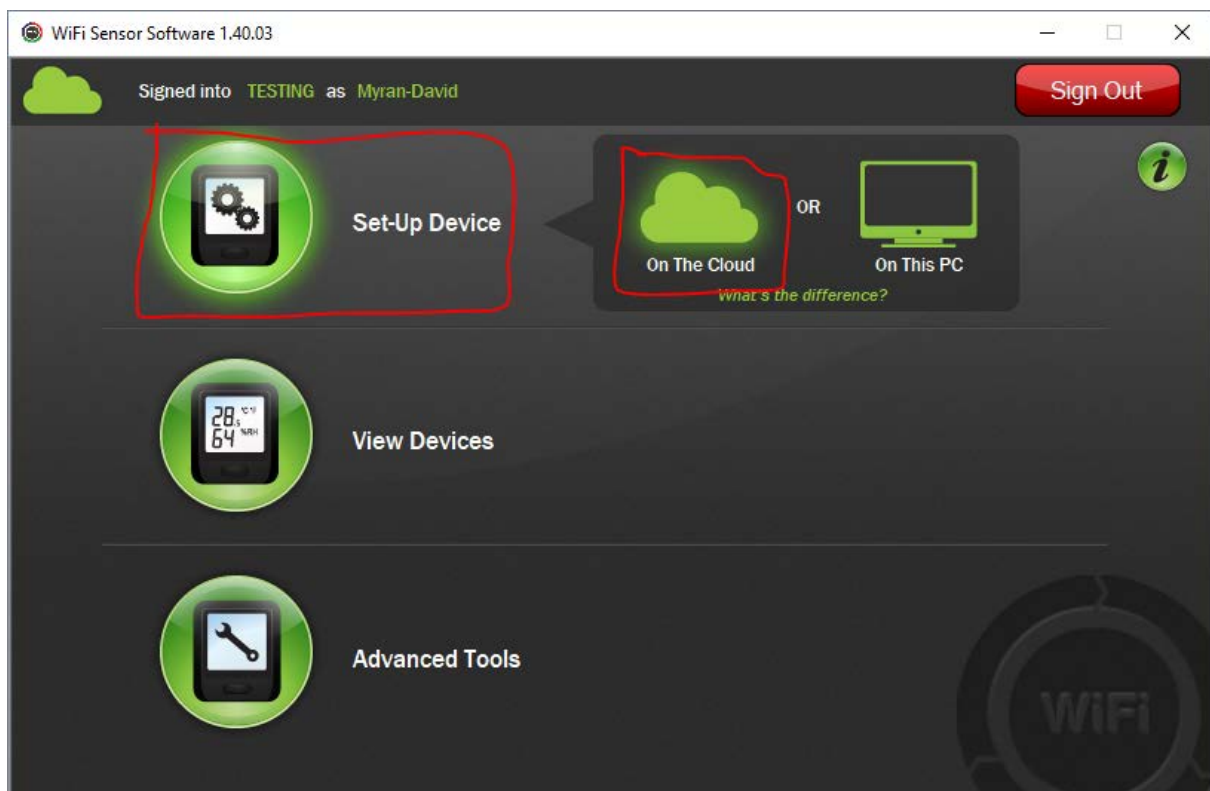
- Now you can configure the logger with your desired settings:
 - o Sensor Name
 - o Use of Degrees C or F.
 - o Sample Rate
 - o Communication Rate
 - o High and low Alarms
- The last step will save the settings then the logger will attempt to communicate with the PC via the network. If successful you will be prompted to unplug the logger.

Cloud Setup

- To set up the logger onto the cloud click on “Sign-In” at the top of the home screen.
- Enter your details for EasyLog Cloud. If you do not yet have an account please visit www.easylogcloud.com

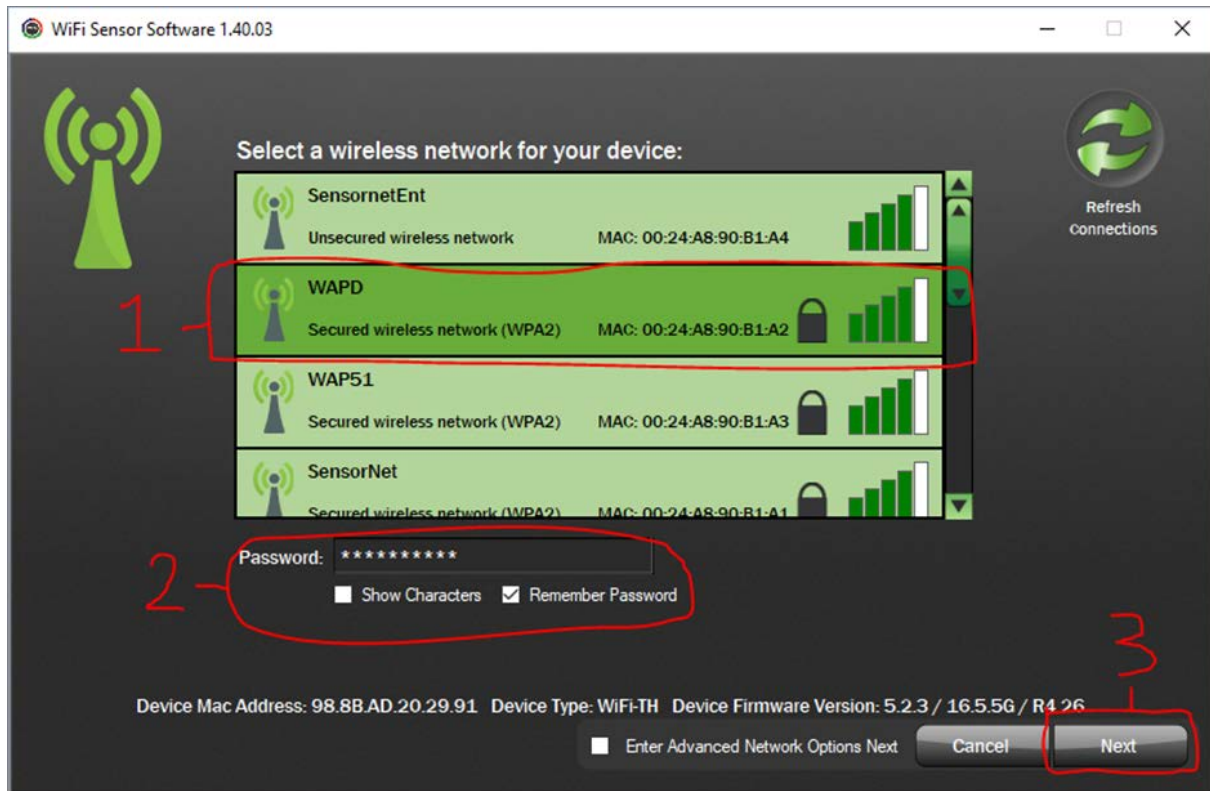


- Next click on “Set-up Device” then “On the Cloud”.



- Ensure that the logger is connected via USB and that only one logger is connected at any one time.

- Next [1] Select the Wi-Fi Access Point that the logger is to use. Then [2] Enter the password for the network. To finish [3] click on “Next”.



- The next screen will allow you to name the sensor. However, note that the settings cannot be changed from this screen. When done click “Next”, the settings will be saved then you will be prompted to unplug the sensor afterwards.
- To view the sensor data or to change its settings such as Sample Rate, Sync Schedule etc... log into the cloud via www.easylogcloud.com
- You can also open the Wi-Fi Sensor Software and click on “View Devices” then “On the Cloud”.